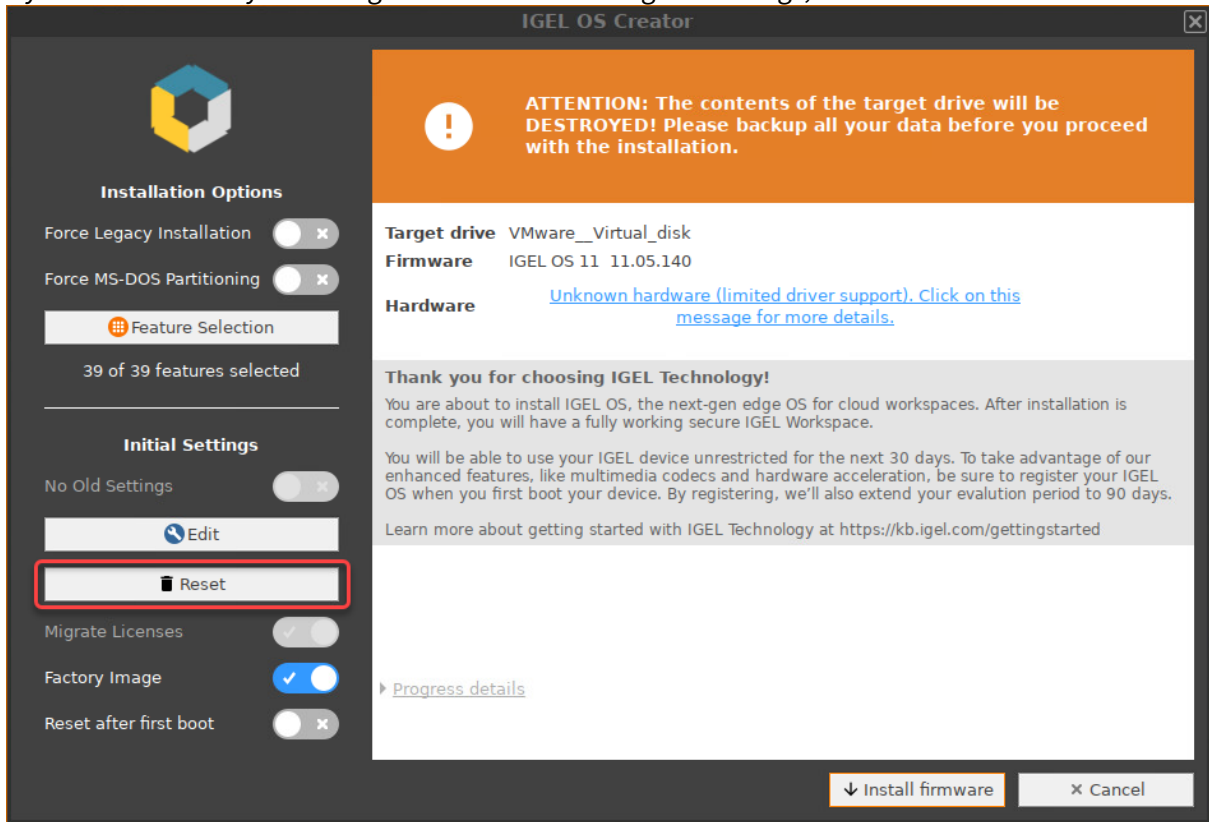




- 10. If you want to undo your changes and restore the original settings, click **Reset**.



- 11. If you want to perform a functional test on each device, enable **Reset after first boot**.

**⚠ Important Note**

If **Reset after first boot** is activated in your factory preload image, the first boot of your devices MUST take place BEFORE shipment to end customers!



**IGEL OS Creator**

**ATTENTION: The contents of the target drive will be DESTROYED! Please backup all your data before you proceed with the installation.**

**Target drive** VMware\_\_Virtual\_disk  
**Firmware** IGEL OS 11 11.05.140  
**Hardware** [Unknown hardware \(limited driver support\). Click on this message for more details.](#)

**Thank you for choosing IGEL Technology!**  
You are about to install IGEL OS, the next-gen edge OS for cloud workspaces. After installation is complete, you will have a fully working secure IGEL Workspace.  
You will be able to use your IGEL device unrestricted for the next 30 days. To take advantage of our enhanced features, like multimedia codecs and hardware acceleration, be sure to register your IGEL OS when you first boot your device. By registering, we'll also extend your evaluation period to 90 days.  
Learn more about getting started with IGEL Technology at <https://kb.igel.com/gettingstarted>

▸ [Progress details](#)

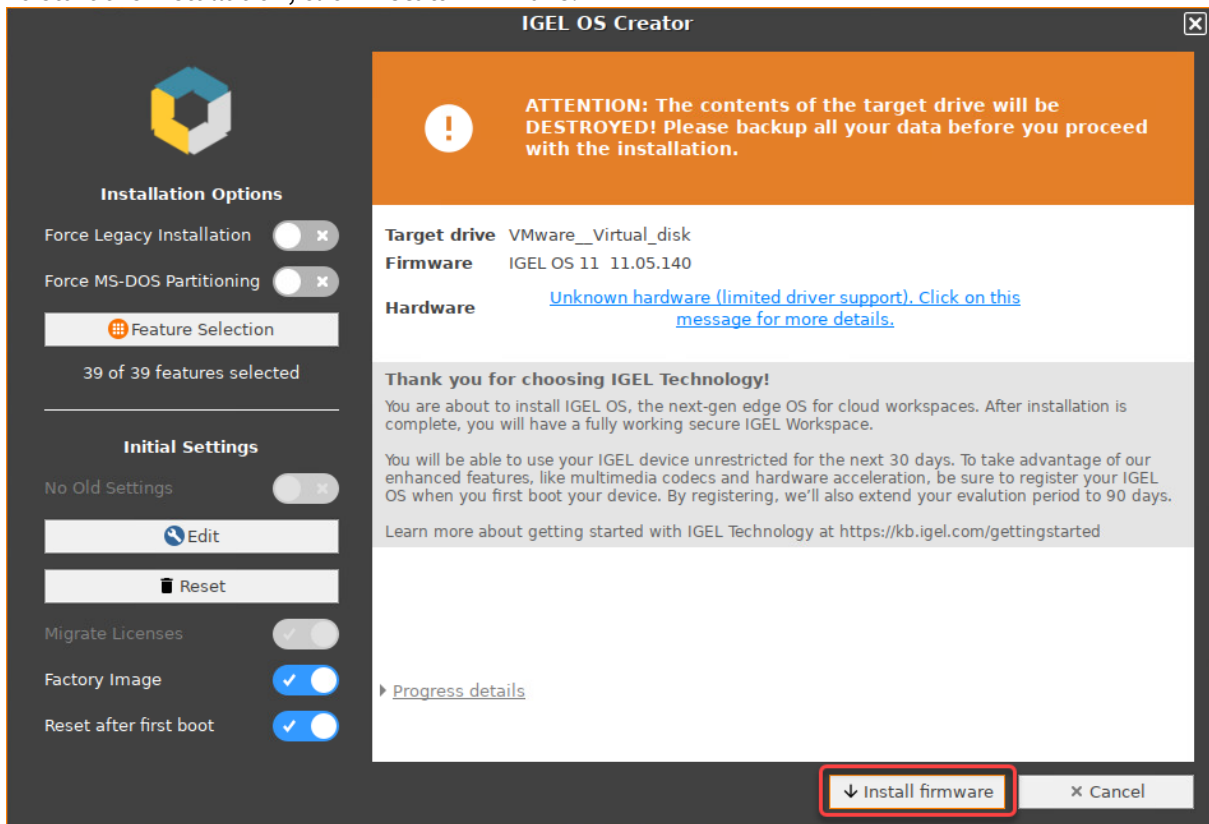
**Installation Options**  
Force Legacy Installation  **X**  
Force MS-DOS Partitioning  **X**  
Feature Selection  
39 of 39 features selected

**Initial Settings**  
No Old Settings  **X**  
**Edit**  
**Reset**  
Migrate Licenses  **✓**  
Factory Image  **✓**  
**Reset after first boot**  **✓**

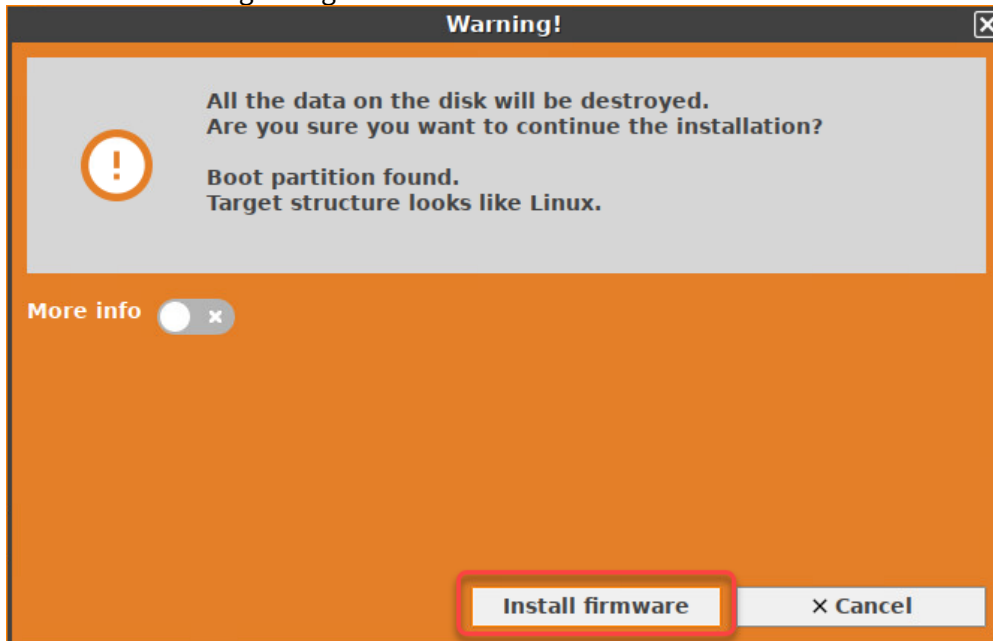
**Install firmware** **Cancel**

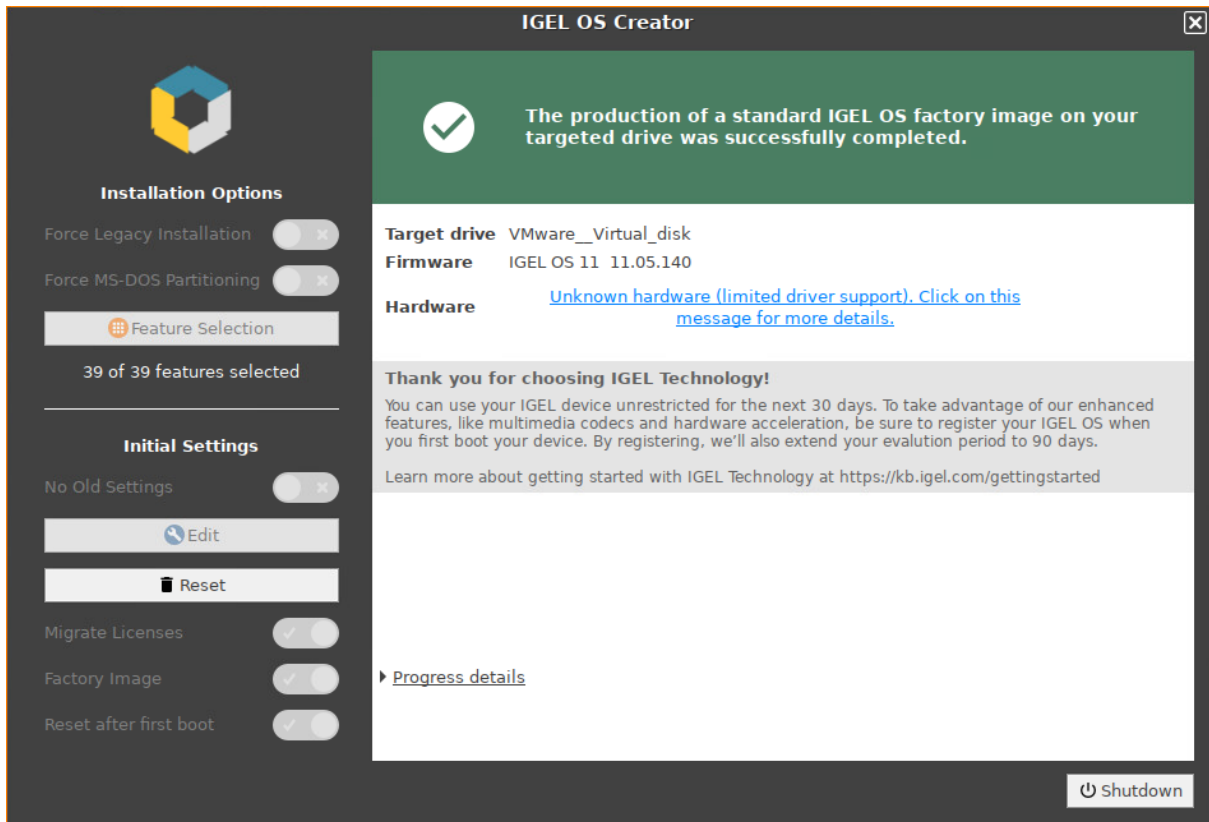


12. To start the installation, click **Install firmware**.



13. Confirm the warning dialog.

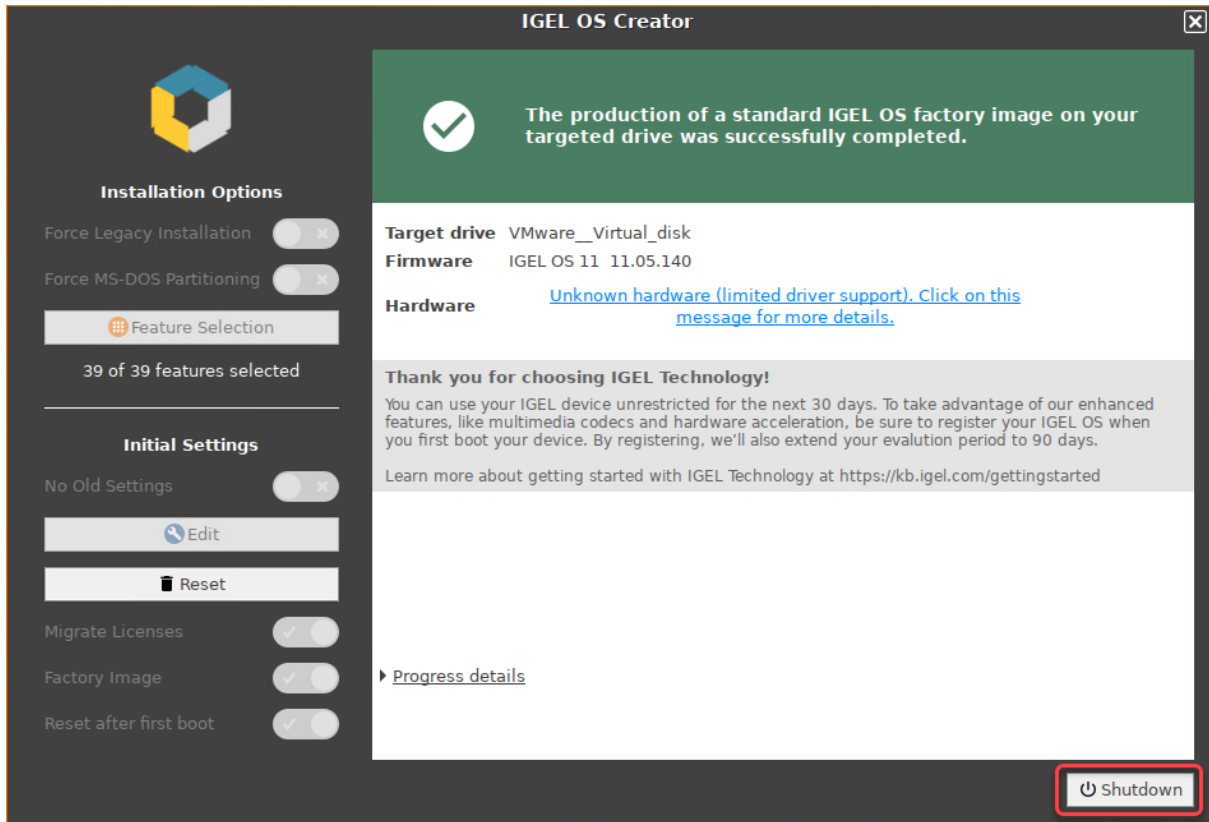




The installation program will set up IGEL OS 11 on the target drive. If you see the success message, the installation is complete.



14. Click on **Shutdown**.



15. Read out the image from your device to deploy it on the units.

**⚠ DO NOT BOOT THE EXACT FACTORY IMAGE THAT IS INTENDED FOR DEPLOYMENT ON YOUR DEVICES! ALL DEVICES TO WHICH THIS IMAGE HAS BEEN DEPLOYED WOULD SHARE ONE AND THE SAME UNIT ID. AS A RESULT, YOUR DEVICES WOULD BE PRACTICALLY UNUSABLE.**

If you want to test the factory image prior to its deployment, transfer it to your target medium first and then boot the image on the machine on which you have created it, or any other test machine. The important thing is that the factory image that will be mass-deployed to your units has not been booted before.

**✓ 16 GiB Maximum Image Size**

The maximum size of the image that is created by the IGEL OS Creator (OSC) is 16 GiB. Therefore, only the first 16 GiB of your storage medium are needed. If your devices have larger storage, this will allow for faster deployment.

16. To ensure the integrity of the image, you should create checksums of the original image and of the images that are deployed, and then compare them. For details, see IGEL Third-party Endpoint Partners: Ensuring Image Integrity with Checksums.

17. Proceed as appropriate:



- If **Reset after first boot** is inactive, you can deploy the images on the units and roll them out straight away. The deployment should include comparing the checksums.
- If **Reset after first boot** has been activated, deploy the images on the units and continue with [Unit Testing](#)(see page 16).(see page 0)

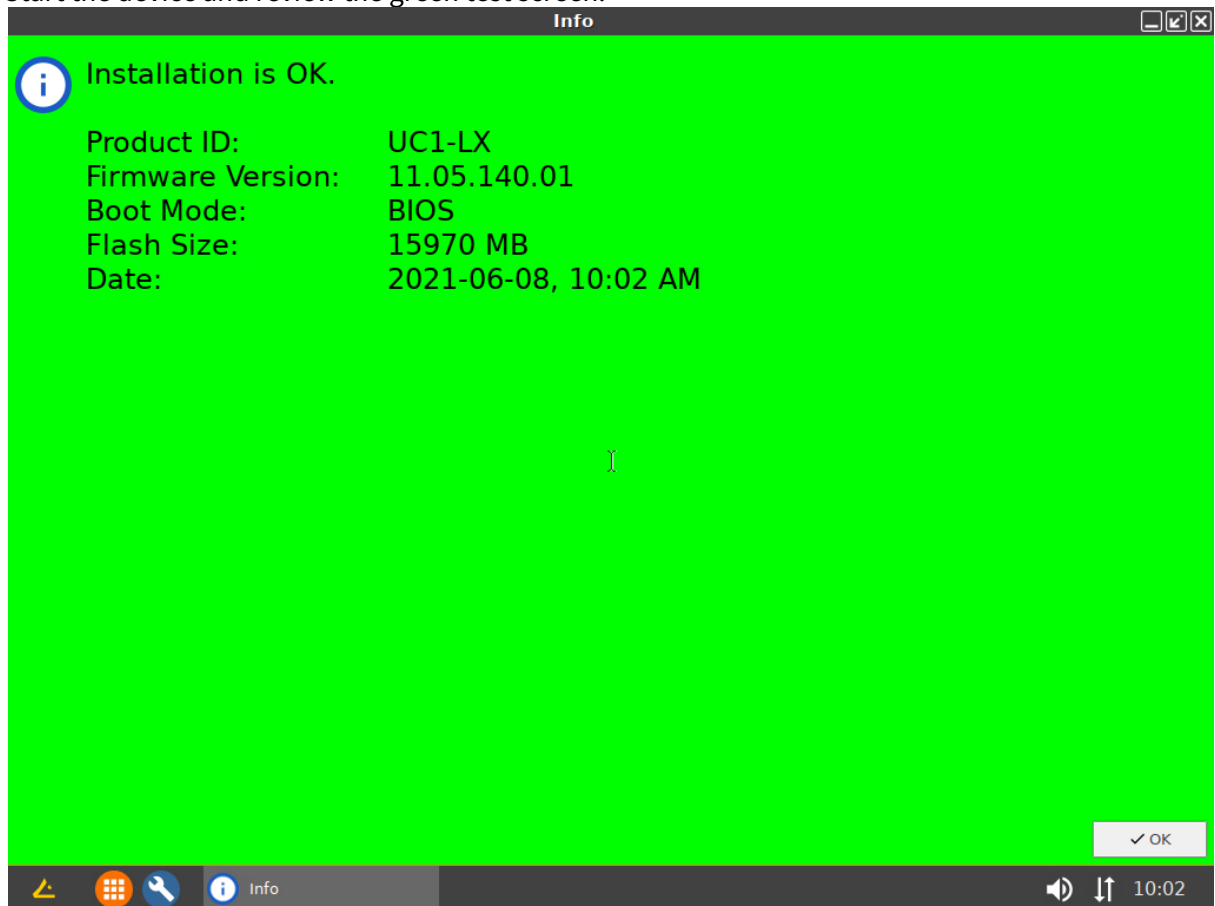
## Unit Testing

Perform the following procedure on the original device and on every unit on which the image has been deployed.

### Important Note

The first boot test **MUST** take place with each unit **BEFORE** it is rolled out. (Otherwise, the device would present the green test screen instead of the IGEL Setup Assistant.)

1. Start the device and review the green test screen.



2. Click **OK**.  
You can access IGEL OS in a regular way and perform your tests.
3. Shut the device down.  
The device is ready for roll-out.